



## RMU CP UNE

### Industrial Gateway

Communications Gateway for Flow  
Meters with Interface UNE82326

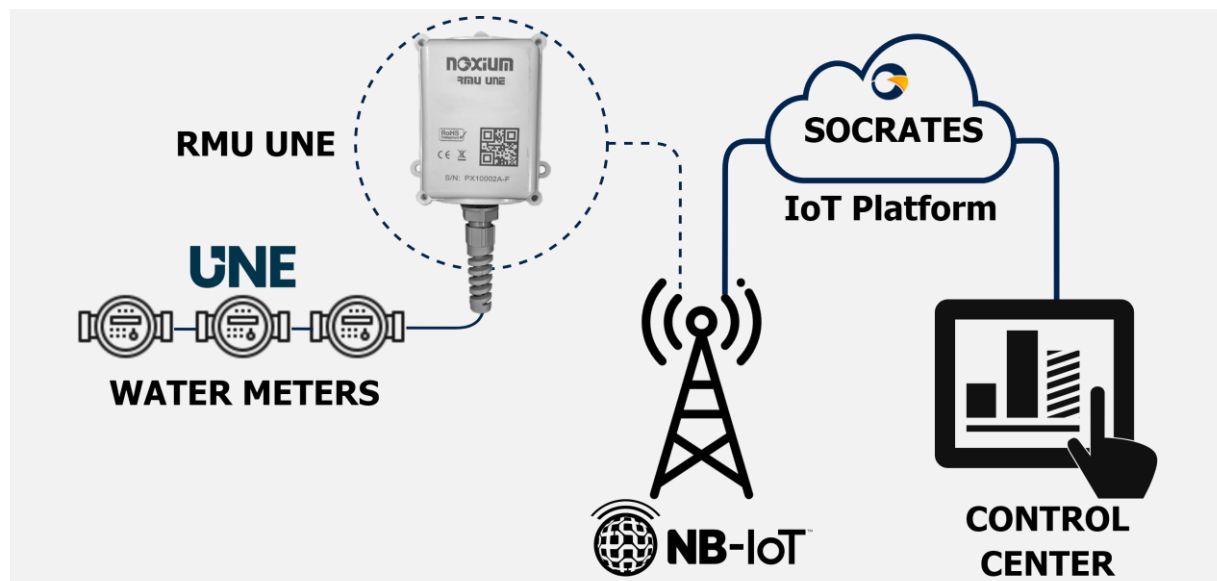


### Main Features

- Ultra low power consumption with optimized operation mode.
- Reliability in Data Acquisition and Communication Operations.
- Remote Configuration and Maintenance: SOCRATES platform.
- High capacity for logging and local storage of readings.
- Ergonomic, small footprint and quick installation.

## Typical Application

### Water meter pickup with UNE82326 Interface



## TECHNICAL SPECIFICATIONS

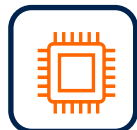
Wireless Connectivity NB2/ CatM1 / GPRS	
LTE+ → NB2 + CatM1	LTE+ NBIoT.2 – data rate (kbps): 32 Download, 70 Upload
	LTE+ CatM.1 - data rate (Mbps): 1 (DL), 1 (UL)
2G → EDGE + GPRS	2G EDGE – data rate (kbps): 296 (DL), 236.8 (UL)
	2G GPRS – data rate (kbps): 107 (DL), 85.6 (UL)
Features and benefits	
External ports and connectors	Exit through cable gland, ensuring watertightness, of 1.5m cable with RJ11 male connector. According to <b>UNE 82326:2010 standard</b>
Local bus Reading UNE-82326:2010	RMU acts as a SADC as defined in the UNE 82326:2010 standard, capable of executing bus reading cycles and capturing the A/A+, B and C response frames of the meters present on the bus (up to 50 meters).
Batteries	Autonomy according to battery pack (2 options) and usage regime.
eSIM support	Integrated eSIM that enables remote switching of communications carriers as specified in GSMA SGP .02 v3.2
FOTA	<b>Sócrates Platform</b> remote firmware upgrade
Recording capacity	It has an internal memory with the capacity to temporarily record more than <b>20,000 readings</b> , with behavior according to the LIFO/FIFO strategy.
Data sending periods	From 24 hours to weekly programming, according to connection schedules.
NFC mobile app	Obtaining configuration parameters and operating statistics



Connectivity 4G LTE (Cat M1/NB-IoT)  
Fallback 2G (s. versiones)



Secure channel communications.  
Data encryption and securization.



NFC chipset, allowing configuration  
parameters and operating statistics to  
be obtained locally via smartphone



IP67/IK09 and UL94 HB  
polycarbonate watertight plastic  
enclosure with sealed screws.



Intelligent self-management  
mechanisms, noise filtering and  
alarm signal processing.



Dimensions: 86x66x35 mm  
Weight: 200 gr. (version 2C1)  
Optional M12 connection fitting



Local interface with two-counter  
capability, and two auxiliary inputs  
for error or flow direction detection



High local registration capacity  
Versatility of configurations  
Complete operation information



Intelligent data transport over  
wireless networks enables remote  
FOTA firmware update and  
configuration



Industrial Working Temperature  
From -40 to 80°C



Internal battery power supply.  
Efficient energy management that  
extends battery life.  
Ultra low power consumption.



Ergonomic, easy installation and  
registration of devices, wall or pole  
mounting

## CERTIFICATIONS

Fields	References
<b>Security</b>	IEC 62368-1 / EN 62368-1
<b>EMC requirements</b>	ETSI EN 301 489-1 V2.2.0 (2017-03) & ETSI EN 301 489-52 V1.1.0
<b>Enviromental</b>	IEC 6800xx Cold, Heat and Variations (-40 a 80°C)(*)
<b>Degrees of Protection</b>	IP 67 IK9
(*) consult degradations due to use in extreme ranges	

## IoT SOCRATES PLATFORM

This platform is in charge of managing the RMU family of devices, as well as managing the data received from them, offering: **Network Monitoring**, **Device Management** and **Data Service**.

**SÓCRATES**  
IoT Platform by Noxium

Concentradores Alarmas Conexiones Registros Dispositivos Series Estadísticas

Inicio > Estado de la red de concentradores

**Alarmas**  
24 h  
Totales: 0  
Medidas: 0  
Pendientes  
Totales: 1352  
Medidas: 0  
Resumen de unidades  
Alta: 2060  
Instaladas: 2060  
Con alarma: 2060  
En almacén: 0

**Listado de concentradores**

default (16) (16 registros/página, total 2124 registros.)

Inst.	Conf.	Alar.	Conexión	N.D.
--	--	--	--	--
		●	2023-02-24 14:32:02	22
		●	2023-02-24 14:31:36	9
		●	2023-02-24 14:31:11	10
		●	2023-02-24 14:30:56	1
	⚠	●	2023-02-24 14:30:56	2
		●	2023-02-24 14:30:46	25
		●	2023-02-24 14:30:31	5
		●	2023-02-24 14:30:26	2

## ANDROID NFC Reader: Sócrates Mobile Assistant

This android application, from now SMA, has a mobile viewer that allows to characterize the suitability of the installations and their locations.

It is a key tool in the certification of installations, so that there is a guarantee of proper operation of the installed devices.

Inicio

Noxium RMU

Introduzca su clave de acceso:

→

Noxium RMU Lector Editor

Nueva Lectura

Datos

F: U.T.NOXIMUM

IM: 863266051178104

HW: R3

TO: 2023-09-18 08:14:07

V: FLOW-SADC-R3 13.00

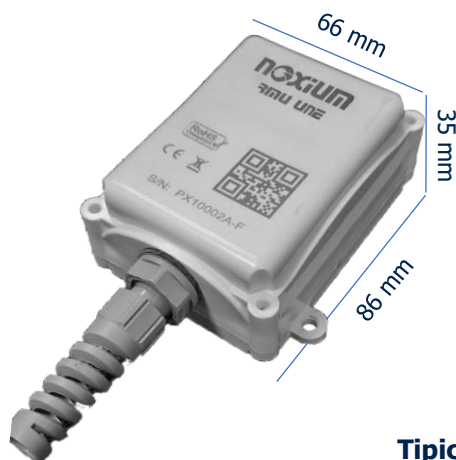
SM: 901288002458823

CI: 8988239000007109925

FM: 2110B07SIM7022

NRE: 25

## Dimensions

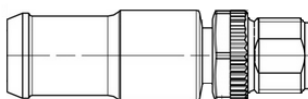


## Wall mounting or pole



## Typical connection

PIN	Señal/Color M12 Hembra
1	Entrada Contador 2
2	Entrada Contador 1
3	Masa de señal (SG)
4	Entrada Digital/Analógica 1
5	Entrada Digital/Analógica 2



I/O terminal 1m cable with M12 connector

## ORDERING INFORMATION

### Available options:

Option	Connectivity	Option	Battery capacity	Option	Accessories
<b>NB</b>	NB2 multiband	<b>2C1</b>	~ 3 years	<b>LM</b>	M12 cable
<b>NBxx</b>	NB2 band xx			<b>LR</b>	RJ11 cable
<b>QM</b>	LTE-CatM1/2G				
<b>Q3</b>	NB/4G CatM/fallback 2G				

\*Variable duration according to device configuration.

### Active references in production:

#### RMU CP UNE NB 2C1 LM

**Industrial Gateway Model UNE Collector** - Collector/Gateway with UNE 82326:2010 Bus technology, with NB-IoT multiband communications, battery power supply with autonomy of ~3 years with cable M12. IP67 Polycarbonate plastic enclosure.