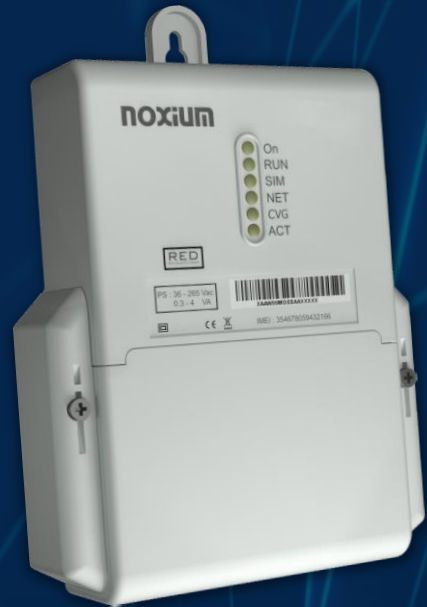




AXOM P

Industrial Cellular Modem

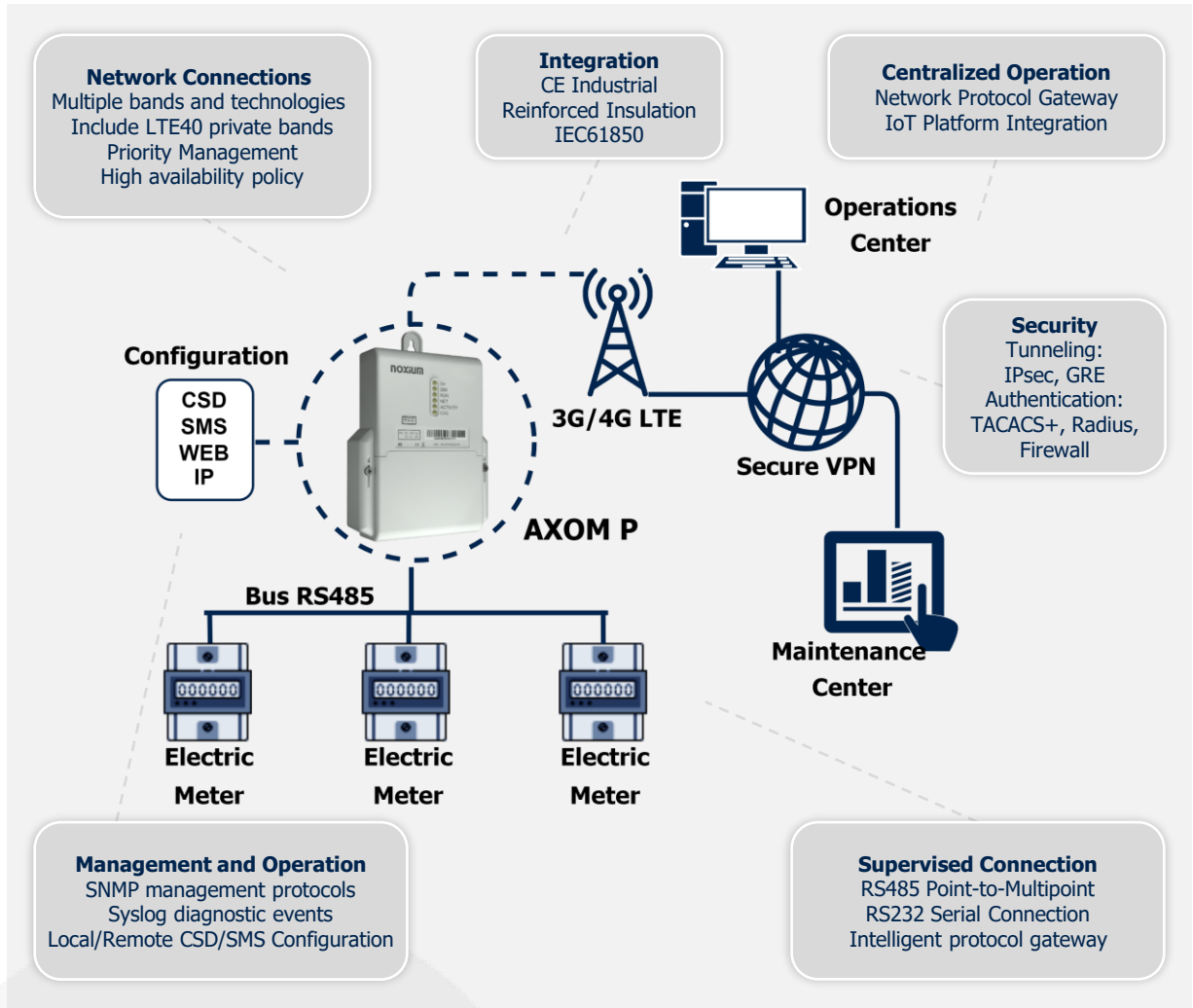
High reliability by integrating WAN data networks intelligent remote management devices



Main Features

- Wireless 2G/3G/4G connection
- Includes LTE Private Bands
- Firewall Security & Tunneling
- Remote Management
- Integrable in IoT Platforms
- Industrial Protocols Management
- RS485 or RS232 multipoint interfaces

Typical Application: Remote Data Collection Connectivity of Isolated Devices in WAN Networks



Application Sectors

- Smart Metering
- Vending Management
- Smart Building
- Infrastructure Supervision
- Environmental Monitoring
- Smart City
- Industry 4.0

Benefits

- Simplicity of use
- High levels of availability
- Wide Deployment
- Reliability and Low Maintenance
- Flexible Connections
- Robust in Industrial Environments
- Level 3 Security Policy



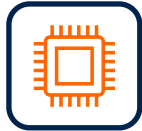
Connectivity
4G LTE / 3G / 2G
Private LTE



Wide range of
Multibands Antennas



Weight: 250 grs.
IP 51



SO Linux.
Access Configuration:
- CLI, Web, SMS,
SNMP, AT Console



SIM Card 1.8/3v
or
eSIM (MMF2)



160x128x40 mm
with Wirecover



Duality Serial
RS232 y RS485
full/half 2/4 wires



Status and Operation
Indications with
6 LEDs



Plastic envelope wire
cover with seal
Wall mounting or
DIN rail accessory



Extended Range
AC/DC Power:
· 48-400Vdc
· 75-265Vac



Firewall & Tunneling
VPN, IPsec, GRE, NTP
TACACS+, Radius



Reinforced Insulation
CE Certified
Industrial Environments



Battery or Supercap
for Warnings and
Alarms



DynDNS, HTTPS
FTP, FTPS
SSH



Operating Temperature
Extended - 20° a 85°C

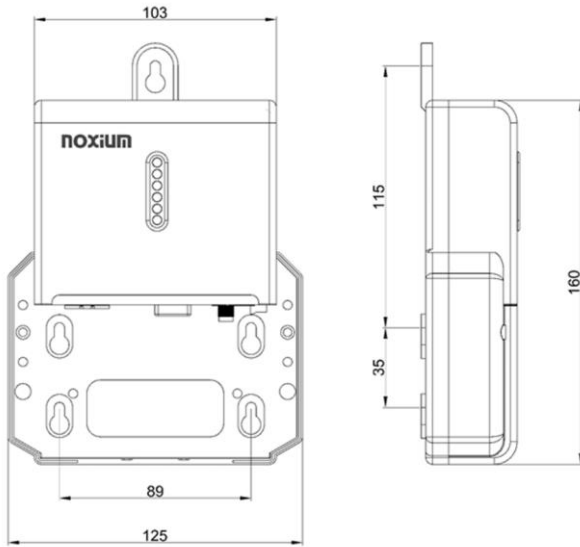
SUPPORTED NETWORK BANDS BY REGION

Model	LTE FDD	LTE TDD	WCMA/HSPA	GPRS/EDGE
Q4L (LATAM)	B1/B3/B4/B5/B7/B8/B28	B40	B1/B2/B4/B5/B8	B2/B3/B5/B8
Q4E (Europe and Asia)	B1/B3/B7/B8/B20/B28a	B38/B40/B41	B1/B5/B8	B3/B8
Q4G (Global)	B1/B2/B3/B4/B5/B7/B8/ B12/B13/B18/B19/B20/ B25/B26/B28	B38/B39/B40/B41	B1/B2/B4/B5/B6/ B8/B19	B2/B3/B5/B8

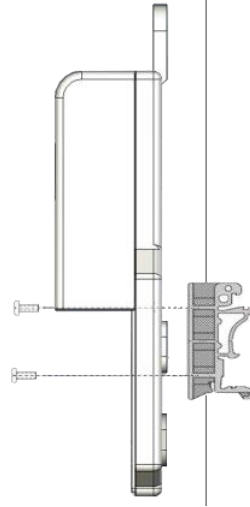
RADIO PERFORMANCE

Feature	LTE FDD	LTE TDD	WCDMA/HSPA	GPRS/EDGE
Speeds	150 (DL)/ 50 (UL)	130 (DL)/ 30 (UL)	384 (DL)/ 384 (UL) 42 (DL)/ 5.76 (UL)	296 (DL)/ 236.8 (UL) 107 (DL)/ 85.6 (UL)
Power	Max Output Power Class 3 (23dBm±2dB)	Class 3 (23dBm±2dB)	Max Output Power Class 3 (24dBm+1/- 3dB)	Max Output Power Class 4 (33dBm±2dB) Class 1 (30dBm±2dB)

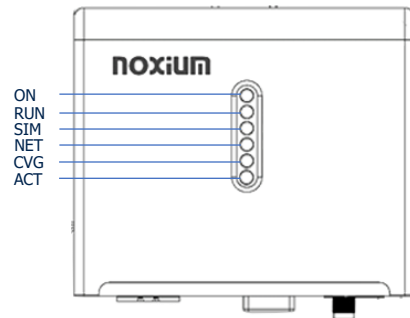
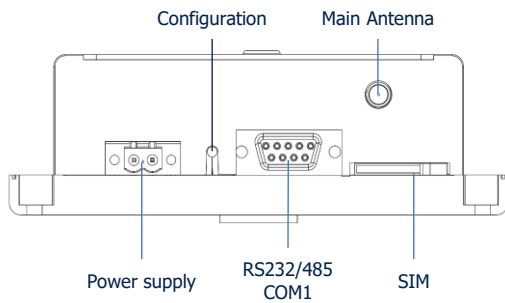
Dimensions



Mural mounting/DIN



Hardware Interfaces: Connections and LEDs



ORDERING INFORMATION

Available options:

Options	Power supply	Options	Accessories	Q4x+	Region
IPS	50-265 Vac/Vdc	RC	With accessories	E	Europe
CPS	9-36 Vdc	CB	RS232+485	L	Latam
XPS	18-72 Vdc	C1	RS232	A	USA
				G	Global

Active references in production:

AXOM P Q4E+ IPS CB RC

Modem with 2G/3G/4G Cat4 radio for EMEA bands in double insulated plastic case, equipped with a dual RS232 and RS485 serial port for telemetry. AC/DC power supply 75 to 265Vac, 50 to 400Vdc via C8 connector. Includes accessories: type 1 antenna, power cable and RS232 communications cable.