



RMU P UNE

Industrial Gateway

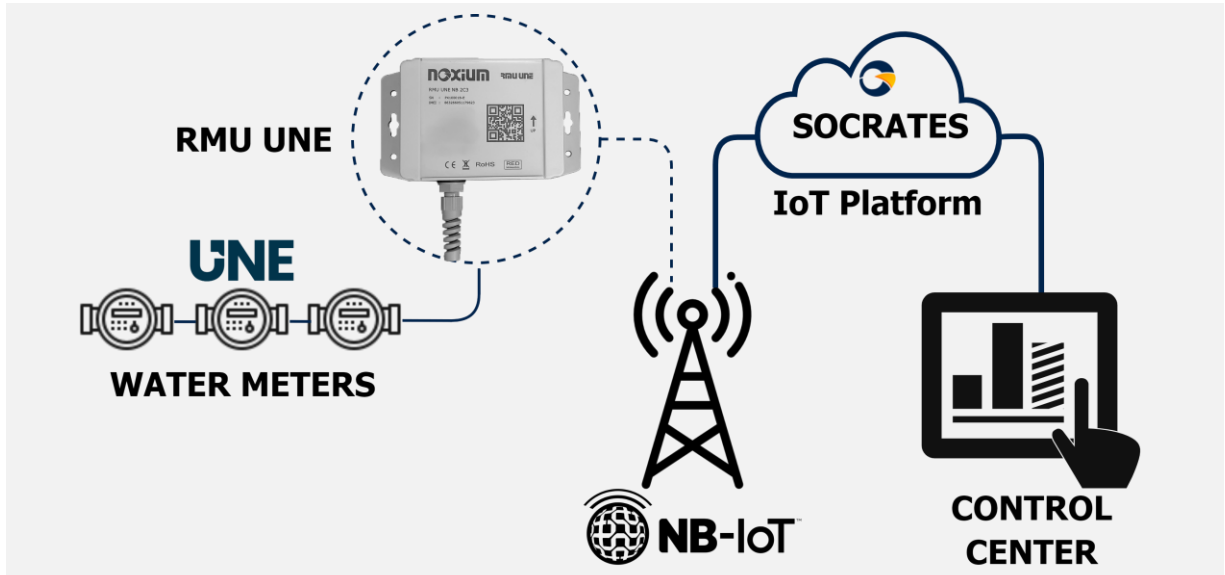
Communications Gateway for Flow Meters with Interface UNE82326



Main Features

- Ultra low power consumption with optimized operation mode.
- Reliability in Data Acquisition and Communication Operations.
- Remote Configuration and Maintenance: SOCRATES platform.
- High capacity for logging and local storage of readings.
- Ergonomic, small footprint and quick installation.

Typical Application Water meter pickup with UNE82326 Interface



TECHNICAL SPECIFICATIONS

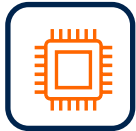
| Wireless Connectivity NB2/ CatM1 / GPRS | |
|--|---|
| LTE+ → NB2 + CatM1 | LTE+ NBIoT.2 – data rate (kbps): 32 Download, 70 Upload |
| | LTE+ CatM.1 - data rate (Mbps): 1 (DL), 1 (UL) |
| 2G → EDGE + GPRS | 2G EDGE – data rate (kbps): 296 (DL), 236.8 (UL) |
| | 2G GPRS – data rate (kbps): 107 (DL), 85.6 (UL) |
| Features and benefits | |
| External ports and connectors | Exit through cable gland, ensuring watertightness, of 1.5m cable with RJ11 male connector. According to UNE 82326:2010 standard |
| Local bus Reading UNE-82326:2010 | RMU acts as a SADC as defined in the UNE 82326:2010 standard, capable of executing bus reading cycles and capturing the A/A+, B and C response frames of the meters present on the bus (up to 50 meters). |
| Batteries | Autonomy according to battery pack (2 options) and usage regime. |
| eSIM support | Integrated eSIM that enables remote switching of communications carriers as specified in GSMA SGP .02 v3.2 |
| FOTA | Sócrates Platform remote firmware upgrade |
| Recording capacity | It has an internal memory with the capacity to temporarily record more than 20,000 readings , with behavior according to the LIFO/FIFO strategy. |
| Data sending periods | From 24 hours to weekly programming, according to connection schedules. |
| NFC mobile app | Obtaining configuration parameters and operating statistics |



Connectivity 4G LTE (Cat M1/NB-IoT)
Fallback 2G (s. versiones)



Secure channel communications.
Data encryption and securization.



NFC chipset, allowing configuration parameters and operating statistics to be obtained locally via smartphone



IP67/IK09 and UL94 HB polycarbonate watertight plastic enclosure with sealed screws.



Intelligent self-management mechanisms, noise filtering and alarm signal processing.



Dimensions: 160x90x62 mm
Weight: 500 gr. (version 2C3)
Optional M12 connection fitting



Local interface with two-counter capability, and two auxiliary inputs for error or flow direction detection



High local registration capacity
Versatility of configurations
Complete operation information



Intelligent data transport over wireless networks enables remote FOTA firmware update and configuration



Industrial Working Temperature
From -40 to 80°C



Internal battery power supply.
Efficient energy management that extends battery life.
Ultra low power consumption.



Ergonomic, easy installation and registration of devices, wall or pole mounting

CERTIFICATIONS

| Fields | References |
|---|--|
| Security | IEC 62368-1 / EN 62368-1 |
| EMC requirements | ETSI EN 301 489-1 V2.2.0 (2017-03) & ETSI EN 301 489-52 V1.1.0 |
| Enviromental | IEC 6800xx Cold, Heat and Variations (-40 a 80°C)(*) |
| Degrees of Protection | IP 67 IK9 |
| (*) consult degradations due to use in extreme ranges | |

IoT SOCRATES PLATFORM

This platform is in charge of managing the RMU family of devices, as well as managing the data received from them, offering: **Network Monitoring, Device Management** and **Data Service**.

SÓCRATES
IoT Platform by Noxium

Concentradores Alarmas Conexiones Registros Dispositivos Series Estadísticas

Inicio > Estado de la red de concentradores

Alarmas
24 h
Totales: 0
Medidas: 0

Pendientes
Totales: 1352
Medidas: 0

Resumen de unidades
Alta: 2060
Instaladas: 2060
Con alarma: 2060
En almacén: 0

Listado de concentradores

default (16) (16 registros/página, total 2124 registros.)

| Inst. | Conf. | Alar. | Conexión | N.D. |
|-------|-------|-------|---------------------|------|
| ... | ... | ... | 2023-02-24 14:32:02 | 22 |
| ... | ... | ... | 2023-02-24 14:31:36 | 9 |
| ... | ... | ... | 2023-02-24 14:31:11 | 10 |
| ... | ... | ... | 2023-02-24 14:30:56 | 1 |
| ... | ... | ... | 2023-02-24 14:30:56 | 2 |
| ... | ... | ... | 2023-02-24 14:30:46 | 25 |
| ... | ... | ... | 2023-02-24 14:30:31 | 5 |
| ... | ... | ... | 2023-02-24 14:30:26 | 2 |

ANDROID NFC Reader: Sócrates Mobile Assistant

This android application, from now SMA, has a mobile viewer that allows to characterize the suitability of the installations and their locations.

It is a key tool in the certification of installations, so that there is a guarantee of proper operation of the installed devices.

Inicio

Noxium RMU Lector Editor

Nueva Lectura

Datos

F: U.T.NOXIUM

IM: 863266051178104

HW: R3

TO: 2023-09-18 08:14:07

V: FLOW-SADC-R3 13.00

SM: 901288002458823

CI: 8988239000007109925

FM: 2110807SIM7022

NRE: 25

Dimensions

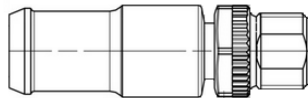


Wall or pole mounting



Typical Connection

| PIN | Señal/Color M12 Hembra |
|-----|-----------------------------|
| 1 | Entrada Contador 2 |
| 2 | Entrada Contador 1 |
| 3 | Masa de señal (SG) |
| 4 | Entrada Digital/Analógica 1 |
| 5 | Entrada Digital/Analógica 2 |



I/O terminal 1m cable with M12 connector

ORDERING INFORMATION

Available options:

| Option | Connectivity | Option | Battery capacity | Option | Accessories |
|-------------|------------------------|------------|------------------|-----------|-------------|
| NB | NB2 multiband | 1C3 | 6 years | LM | M12 cable |
| NBxx | NB2 band xx | 2C3 | 12 years | LR | RJ11 cable |
| QM | LTE-CatM1/2G | | | | |
| Q3 | NB/4G CatM/fallback 2G | | | | |

Active references in production:

RMU P UNE NB 2C3

Industrial Gateway Model UNE Collector - Collector/Gateway with UNE 82326:2010 Bus technology, with NB-IoT multiband communications, battery power supply with autonomy of 6 years. IP67 Polycarbonate plastic enclosure.